

Description of the male of *Campodorus hyperboreus* (Holmgren, 1855) (Ichneumonidae, Hymenoptera)

Reijo Jussila

Krouvintie 92, SF-21330 Paattinen, Finland.

Campodorus hyperboreus (Holmgren, 1855)

Mesoleius hyperboreus Holmgren 1855:148, ♀.

Campodorus hyperboreus (Holmgren): Aubert 1976: 272, ♀.

Campodorus hyperboreus is a high boreal ichneumonid species known only from females from Swedish Lapland (Roman 1909) until one male and one female were found in Finnish Lapland EnL: Enontekiö, Middle Urtaspahta 769:26 24 July 1986 on flower clusters of *Angelica archangelica* subsp. *archangelica* (T. Lammes leg.). The following description of the male is based on the Enontekiö specimen.

Male: Length 6.5 mm. Head shagreened and mat; vertex very slightly narrowed behind compound eyes (Fig. 1); malar space about 0.4 x width of mandible; clypeus moderately wide (width about 2.0 x length), its profile somewhat convex, swollen medially near apex, apical margin rounded on midline, laterally sharp; upper tooth a little wider and longer than lower tooth; flagellum with 28 segments, length-to-width ratios: 1st segment about 7.5, 2nd 4.4, 7th 2.1 and penultimate about 1.8. Mesoscutum mat, notaulus reaching about 0.5 the distance to scutellum; mesopleurum shagreened and (except for shiny speculum) mat; propodeum shagreened and mat, too, median carinae rather distinct. Areolet of front wing absent; nervellus of hind wing antefurcal, intercepted distinctly below the middle. Length of hind femur about 5.5 x width; claws of moderate size. Gaster dorsally mat, apically more shiny; length of 1st segment about 1.6 x apical width, its median dorsal carinae rather strong, reaching about 0.5 the distance to apex.

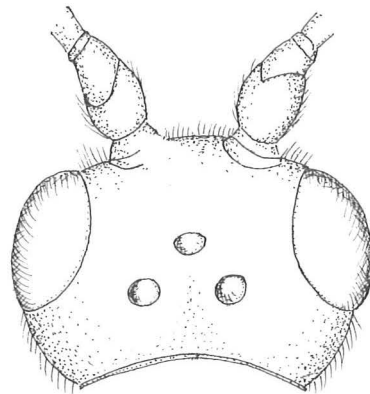


Fig. 1. Head of *Campodorus hyperboreus* (Holmgren), in sinistral view (male from Enontekiö).

Black; yellow on face, clypeus, mandible (except for brown teeth), palpi, gena, humeral bar, tegula, tip of pronotal lobe, spot under fore wing, mesepimeron and prepectus. Legs reddish; coxae and trochantera yellow (black blotch on hind coxa and hind first trochanter). Gastral tergites black, but yellow orange midline on tergites 3 to 4 and yellow lateral and apical margin on all tergites (except 1st).

References

- Aubert, J.-F. 1976: Les *Mesoleius* Holmgren des collections Holmgren et Thomson (Hymenoptera: Ichneumonidae). — *Entomol. Scand.* 7:267—281.
- Holmgren, A. E. 1855: Försök till uppställning och beskrifning af de i Sverige funna tryphonider (Monographia Tryphonidum Sueciae). — *K. Svenska Vet. Akad. Handl., N.F.* 1(1):93—246.
- Jussila, R. 1991: Ichneumonidae new to Finland (Hymenoptera). I. — *Entomol. Fennica* 2:37—42.
- Roman, A. 1909: Ichneumoniden aus dem Sarekgebirge. — *Naturwiss. Untersuch. des Sarekgebirges in Schwedisch-Lapland* 4:199—374.

Received 13.VI.1990